

Specifications

Microscope unit		
Type		Galileo type
Magnification		Drum, 5-step magnification
Magnification steps		6/10/16/25/40
Overall magnification (actual vision field)		6.37 ( ϕ 35.1mm) 9.94 ( ϕ 22.5mm) 15.87 ( ϕ 14.1mm) 25.37 ( ϕ 8.8mm) 39.62 ( ϕ 5.6mm)
Eyepiece lens	Magnification	12.5x
	Diopter adjustment range	-5D to +5D
Binocular tubes		PD adjustment: 55 to 78mm
Illumination unit		
Illumination field	Slit width	0 to14mm, can be altered gradually(14mm=circle)
	Slit length	14 to1mm, can be altered gradually(14mm=circle)
	Aperture diameter	ϕ 14, 10, 5, 2, 1, 0.2 mm
Slit direction		Vertical to horizontal, can be altered gradually Inclination: 5° /10° /15° /20° Side swing
Filter		Blue filter, red-free filter, amber filter, UV cut filter (normal use), IR cut filter (normal use), ND filter (13% transmission), exciter filter for slit lamp*, barrier filter for slit lamp*
Illumination lamp	Halogen type:	12V, 30W
	LED type:	3A, 10W
Base unit		
Forward-backward movement		90mm
Right-left movement		100mm
Vertical movement		30mm
Amount of movement in all directions		12mm
Chinrest unit		
Amount of vertical movement of chinrest		80mm
Fixation target **		Fixation target with diopter adjustment Luminous fixation target
Fixation lamp		LED (Red)
Other Specifications		
Dimensions	w/Table	550mm(W) x 420mm(D) x 752 to 782mm(H)
	w/ Unit Table	440mm(W) x 397mm(D) x 752 to 782mm(H)
	w/o Table	329mm(W) x 396mm(D) x 652 to 682mm(H)
	w/o Table and Chinrest	329mm(W) x 331(304)mm(D) x 652 to 682mm(H)
	Weight: w/Table	19kg
	w/ Unit Table	18kg
	w/o Table	13kg
	w/o Table and Chinrest	11.5kg
	Table size	550mm x 370mm
	Unit Table size	440mm x 350mm
Height from the top to patient's eye		375mm
Power Supply		100-240V AC, 50-60Hz, 110VA

\* A model with standard cobalt blue filter instead of the exciter/barrier filter combination is also available.  
\*\* A model without fixation target is also available.

Optional Accesory :  
Electric Instrument Table for SL-D701



\* Not available in all countries, please check with your distributor for availability in your country  
\* Subject to change in design and/or specifications without advanced notice.  
In order to obtain the best results with this instrument,  
please be sure to review all user instructions prior to operation.



TOPCON CORPORATION



TOPCON CORPORATION



EC9711081  
TOPCON CORPORATION

**TOPCON CORPORATION**  
75-1 Hasunuma-cho, Itabashi-ku, Tokyo 174-8580, Japan. Phone:+81-(0)3-3558-2522/2502 Fax:+81-(0)3-3965-6898 www.topcon.co.jp

**TOPCON MEDICAL SYSTEMS, INC.**  
111 Bauer Drive, Oakland, NJ 07456, U.S.A.  
Phone:+1-201-599-5100 Fax:+1-201-599-5250 www.topconmedical.com

**TOPCON CANADA INC.**  
110 Provencher Avenue, Boisbriand, QC J7G 1N1 CANADA  
Phone:+1-450-430-7771 Fax:+1-450-430-6457 www.topcon.ca

**TOPCON EUROPE MEDICAL B.V.**  
Essebaan 11, 2908 LJ Capelle a/d IJssel, P.O.Box145,  
2900 AC Capelle a/d IJssel, THE NETHERLANDS  
Phone:+31 -(0)10-4585077 Fax:+31 -(0)10-4585045  
E-mail: medical@topcon.eu, www.topcon-medical.eu

**ITALY OFFICE**  
Viale dell' Industria 60, 20037 Paderno Dugnano, (Milano), ITALY  
Phone:+39-02-9186671 Fax:+39-02-91081091 E-mail: info@topcon.it; www.topcon.it

**DANMARK OFFICE**  
Praestemarksvej 25, 4000 Roskilde, DANMARK  
Phone:+45-46-327500 Fax:+45-46-327555  
E-mail: topcon@topcondanmark.dk, www.topcondanmark.dk

**IRELAND OFFICE**  
Unit 276, Blanchardstown, Corporate Park 2 Ballycoolin Dublin 15, IRELAND  
Phone:+353-18975900 Fax:+353-18293915 E-mail: medical@topcon.ie; www.topcon.ie

**TOPCON S.A.R.L.**  
BAT A1 3 route de la révolte 95206 SAINT DENIS CEDEX  
Phone:+33-1-49-21-23-23 Fax: +33-1-49-21-23-24 E-mail:topcon@topcon.fr; www.topcon.fr

**TOPCON DEUTSCHLAND MEDICAL G.m.b.H.**  
Hanns-Martin-Schleyer Strasse 41, D-47877 Willich, GERMANY  
Phone:+49-(0)2154-8850 Fax:+49-(0)2154-885177 E-mail:med@topcon.de; www.topcon.de

**TOPCON SCANDINAVIA A.B.**  
Neogatan 2, P.O.Box 25, 43151 Mölndal, SWEDEN  
Phone:+46-(0)31-7109200 Fax:+46-(0)31-7109249 E-mail:medical@topcon.se; www.topcon.se

**TOPCON ESPAÑA S.A.**  
HEAD OFFICE  
Frederic Mompou 4 Esc. A Bajos 3, 08960 Sant Just Desvern Barcelona, SPAIN  
Phone:+34-93-4734057 Fax:+34-93-4733932 E-mail: medical@topcon.es; www.topcon.es

**TOPCON ( GREAT BRITAIN ) LTD.**  
Topcon House,Kennet Side,Bone Lane,Newbury,Berkshire RG14 5PX United Kingdom  
Phone:+44-(0)1635-551120 Fax:+44-(0)1635-551170 E-mail:medical@topcon.co.uk; www.topcon.co.uk

**TOPCON POLSKA Sp. z o. o.**  
ul. Warszawska 23, 42-470 Siewierz, POLAND  
Phone:+48-(0)32-6705045 Fax:+48-(0)32-6713405 www.topcon-polska.pl

**TOPCON SINGAPORE MEDICAL PTE. LTD.**  
1 JALAN KILANG TIMOR #09-01 PACIFIC TECH CENTRE SINGAPORE 159303  
Phone:+65-68720606 Fax:+65-67736150  
E-mail:medical\_sales@topcon.com.sg www.topcon.com.sg

**REPRESENTATIVE OFFICE IN INDONESIA**  
Level 38, Tower A, Kota Kasablanka unit GH-04, Jl.  
Casablanca, Kav 88, Jakarta, Indonesia 12870  
Phone:+62-21-2963-8004

**TOPCON INSTRUMENTS ( MALAYSIA ) SDN.BHD.**  
No. D1, (Ground Floor), Jalan Excella 2, Off Jalan Ampang Putra,  
Taman Ampang Hilir, 55100 Kuala Lumpur,MALAYSIA  
Phone:+60-(0)3-42709866 Fax:+60-(0)3-42709766

**TOPCON INSTRUMENTS ( THAILAND ) CO.,LTD.**  
77/62 Sinnsathorn Tower, 37th Floor,Krungthoburi Rd.,Klongtonsaï,  
Klongsarn, Bangkok 10600,THAILAND  
Phone:+66(0)2-440-1152-7 Fax:+66-(0)2-440-1158

**Mehra Eyetech Private Limited**  
801 B Wing, Lotus Corporate Park, Graham Firth Steel Compound Goregaon (East)  
Mumbai 400063 Maharashtra, INDIA  
Phone:+91-22-61285455 www.mehraeyetech.in

SL-D701

Digital Slit Lamp



DC-4 Digital Camera

High Resolution  
Seamless Integration  
Multiple Functions



YOUR VISION. OUR FOCUS.

# SL-D701

Digital Slit lamp

LED Light Source  
Sharp, Bright and Homogeneous Illumination



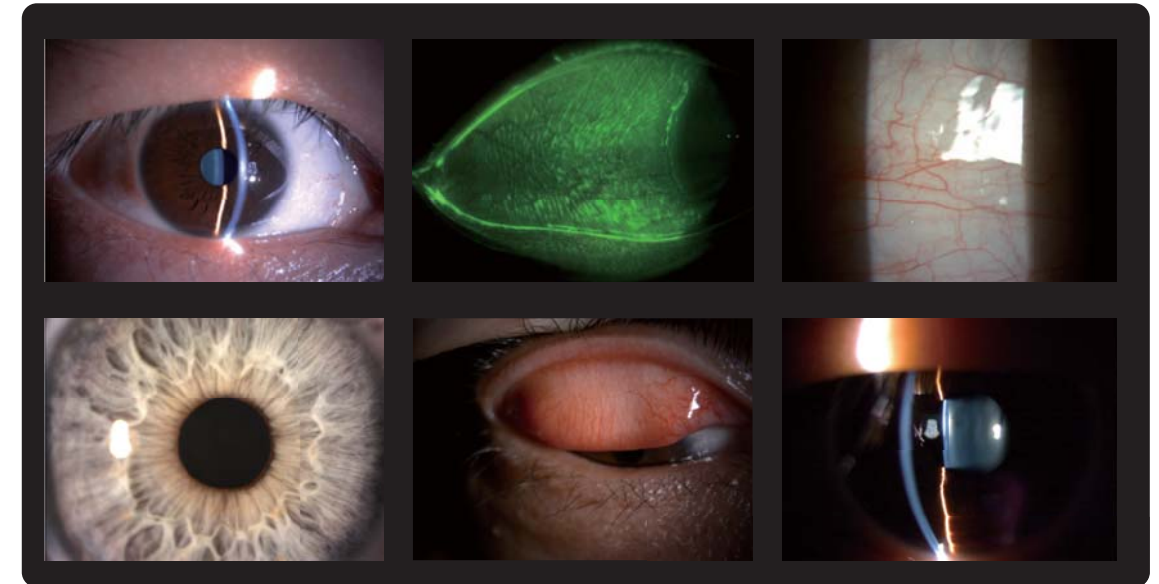
## Features

- » Available in LED and Halogen Light Source models\*
- » New DC-4 Digital Camera\*\*
  - High Resolution
  - Smart Capture Function
  - Still Image with Auto Exposure Function
  - Seamless Integration
- » Blue Free Filter™ System\*\* for Superior Fluorescent Viewing
- » Meibomian Gland Observation Capability\*\*

## Advantages & Benefits of LED

### LED Light Source

The new LED illumination source allows observation under a brighter, more homogeneous condition than the conventional halogen bulb source. The short wavelength of the LED spectrum lets the operator see minute details such as flare in the anterior chamber and vitreous. Color temperature remains uniform when adjusting light intensity insuring consistent viewing results throughout the entire eye's optical path.



### Advantages of LED Illumination

- ✓ Brighter illumination enhances observation of the eye structures
- ✓ LED wavelength characteristics allow for easy visualization of subtle details such as flare and inflammation
- ✓ Consistent color temperature throughout the entire intensity adjustment
- ✓ Substantial reduction in bulb replacement
- ✓ Energy efficient and cost saving







## DC-4 Digital Camera

Exclusive from Topcon

### Smart Capture Function

With a simple push of the joystick trigger the operator can obtain a rapid series of images that are quickly saved for later revision and selection. The Smart Capture function minimizes failed images or blurry pictures, especially in children and non-cooperative patients.

### Still Image with Auto Exposure (AE) Function

By adjusting the shutter speed and sensor gain, the brightness of the image will be automatically compensated. As a result the live image used for alignment and the final picture will have the same color balance.

### Live View

When using the EZ Capture software in conjunction with the DC-4, a real time live image will be seen on the monitor to facilitate centering and focusing. The live image can be used to show the eye condition to third party individuals for teaching and education. Sensitivity, shutter speed and white balance can be adjusted from the computer.

### Video Capability

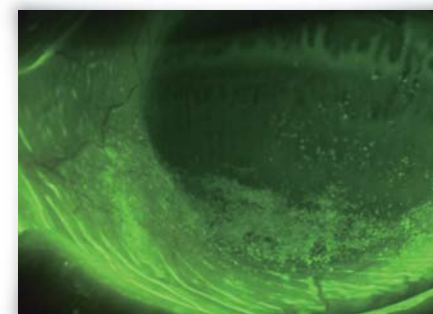
The DC-4 allows for easy acquisition of video clips of the eye movements without interfering with the examination.

## Additional Filters

### Blue Free Filter™ System

Topcon Blue Free Filter observation can be carried out using the exciter filter for slit lamp and barrier filter for slit lamp. Tear flow details and scars can be clearly viewed with less glare or pooling.

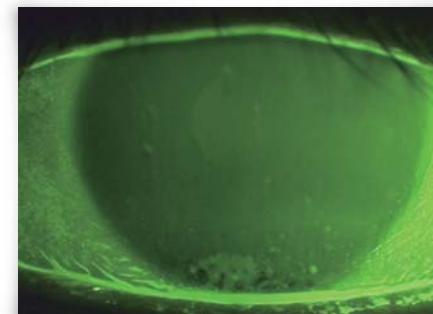
\*Images provided by Toru Noda, MD, PhD, Department of Ophthalmology, Tokyo Medical Center



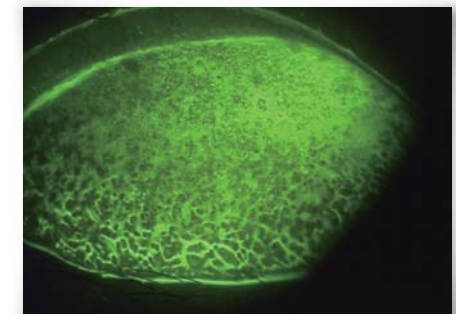
Blue Free Filter™



Cobalt Blue Filter



Blue Free Filter™



Blue Free Filter™

### Amber Filter

A warmer, more pleasant tone of the skin and eye structures can be obtained by inserting the amber filter. This color correction filter produces a pleasant coloration that is especially useful in slit lamp imaging.

Amber



Non Amber





# Meibomian Gland Observation & Other Features

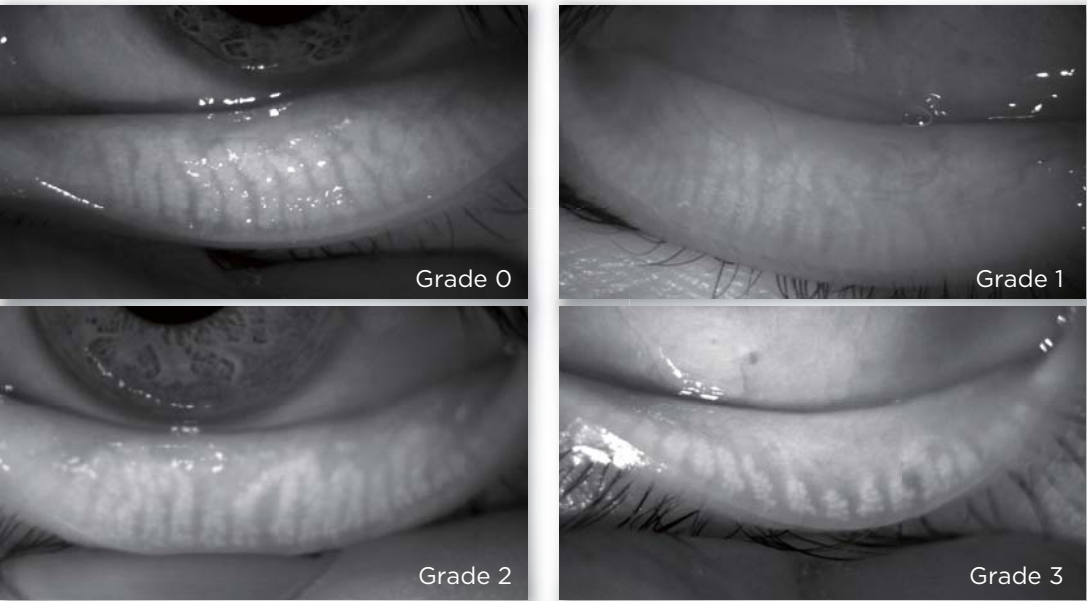
# System Chart

## Meibomian Gland Observation \*

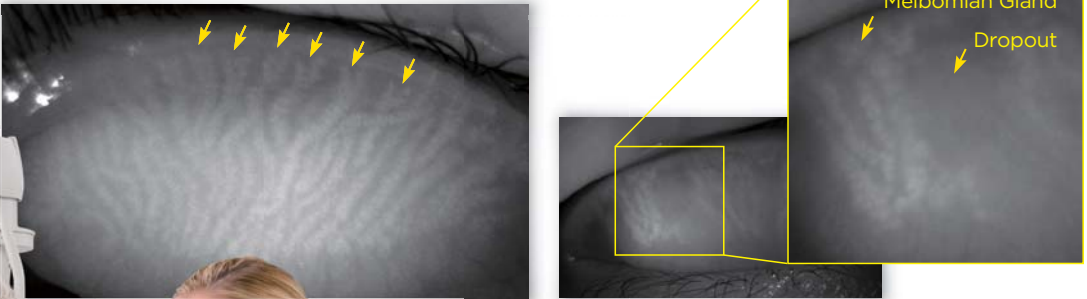
Meibomian gland observation can be performed and documented using the optional meibomian gland observation system. Because of the high resolution of the DC-4, fine detail of glandular acinus and subtle changes of meibomian glands can be seen and photographed for a better understanding of its condition.

\* With a combination of SL-D701 + DC-4 (Option)+ BG-5(Optional)

### Meiboscore: Grade 0 ~ 3



### Meibomian Gland Close-up!



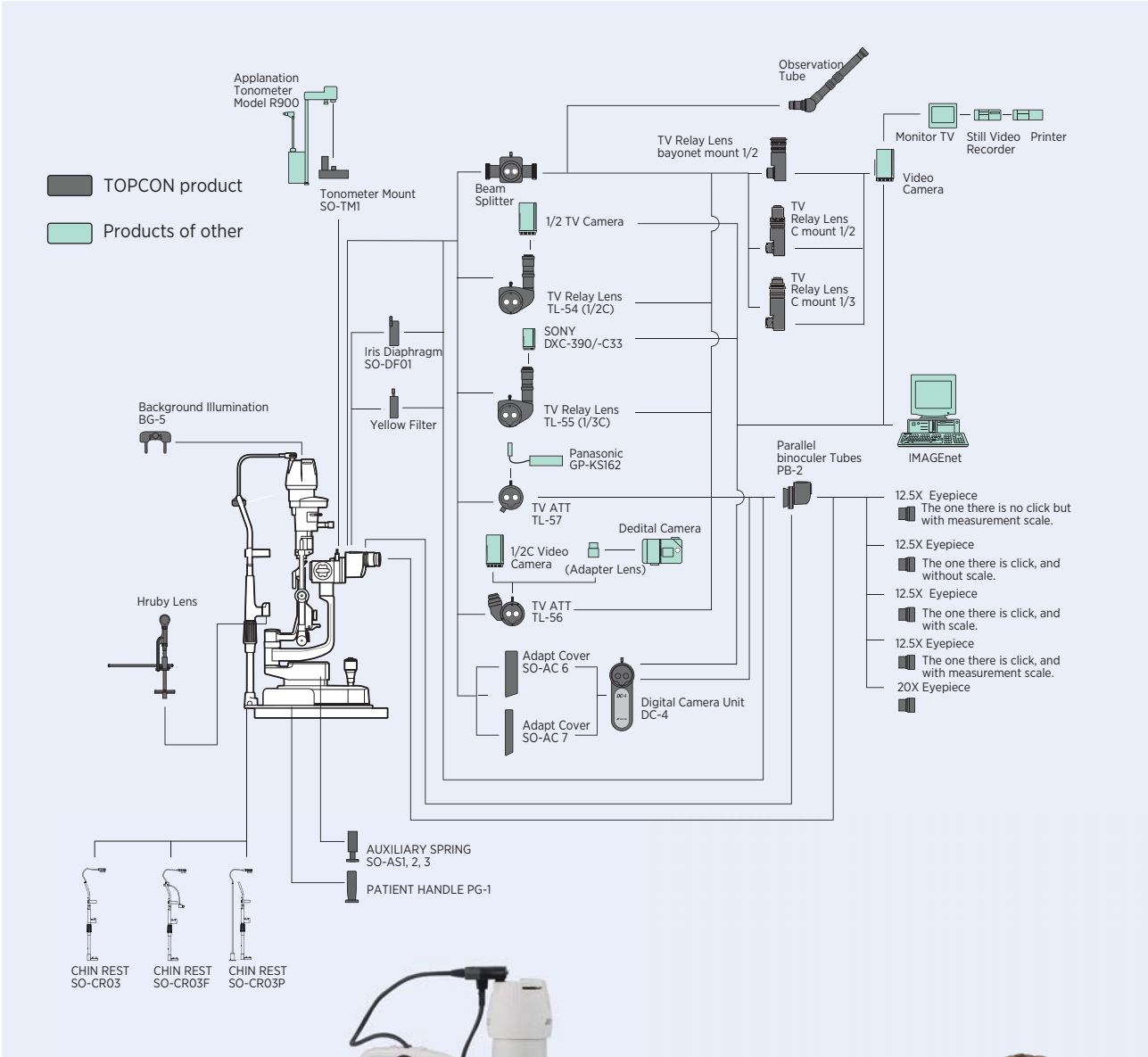
\*Images and meiboscore provided by: Reiko Arita, MD, PhD, Itoh Clinic, Department Ophthalmology, the University of Tokyo School of Medicine

### Right / Left Eye Indicator

When in photography mode, the SL-D701 automatically recognizes the patient's right and left eye, simplifying the photographic procedure.

### More Than Just the Basic Function

Versatile lens coatings, including a preservative layer, and the use of apochromatic optics enhance the observation and require less maintenance.



## SL-D701 Digital Slit Lamp



\*Shown with optional DC-4 digital attachment, optional handle bars and optional electric table.